



**SOFITEL DUBAI DOWNTOWN
PRESENTATION**

2019



SOFITEL
HOTELS & RESORTS

TABLE OF CONTENT

01. THE HOTEL	P.3-5
02. LOCATION & ACCESS	P.6-7
03. ROOMS & SUITES	P.8-15
04. RESTAURANTS & BARS	P.16-23
05. SOFITEL SPA & SOFITEL FITNESS	P.24-26
06. LE PETIT PRINCE KIDS CLUB	P.27-28
06. MEETINGS & EVENTS	P.29-37
07. KEY HIGHLIGHTS	P.38-39
FEEL WELCOME AND CONTACT US	P.40



THE HOTEL



THE HOTEL

The only international 5-star hotel connected to The Dubai Mall through an air-conditioned skywalk. Apart from the immediate proximity to The Dubai Mall and Burj Khalifa, the hotel is a few minutes away from Coca-Cola Arena, Dubai Opera, City Walk and also offers shuttle bus service to Kite Beach, La Mer Beach, The Mall of the Emirates and other destinations.

SOFITEL HOTELS & RESORTS    @SofitelDubaiDowntown  @SofitelDXBDownT

PROUD WINNER OF PRESTIGIOUS AWARDS

- 2018:** 'Unique Hotel of the Year 2018 for Dubai' at the Travel & Hospitality Award
- 2018:** 'Luxury City Hotel of the Year 2018' at Luxury Travel Guide
- 2016:** 'World's Leading Hotel Service' at the World Travel Awards Grand Final'
- 2016:** 'Recognition by Conde Nast Traveler US Readers Choice Award amongst the top 20 hotels in Middle East & Africa'
- 2016:** 'New Luxury Hotel of the Year for Dubai' by Luxury Travel Guide Awards
- 2015:** 'World's Leading Hotel Service' at the World Travel Awards Grand Final



LuxuryTravelGuide
GLOBAL AWARDS 2016



THE LOBBY/ HOTEL ENTRANCE



LOCATION & ACCESS



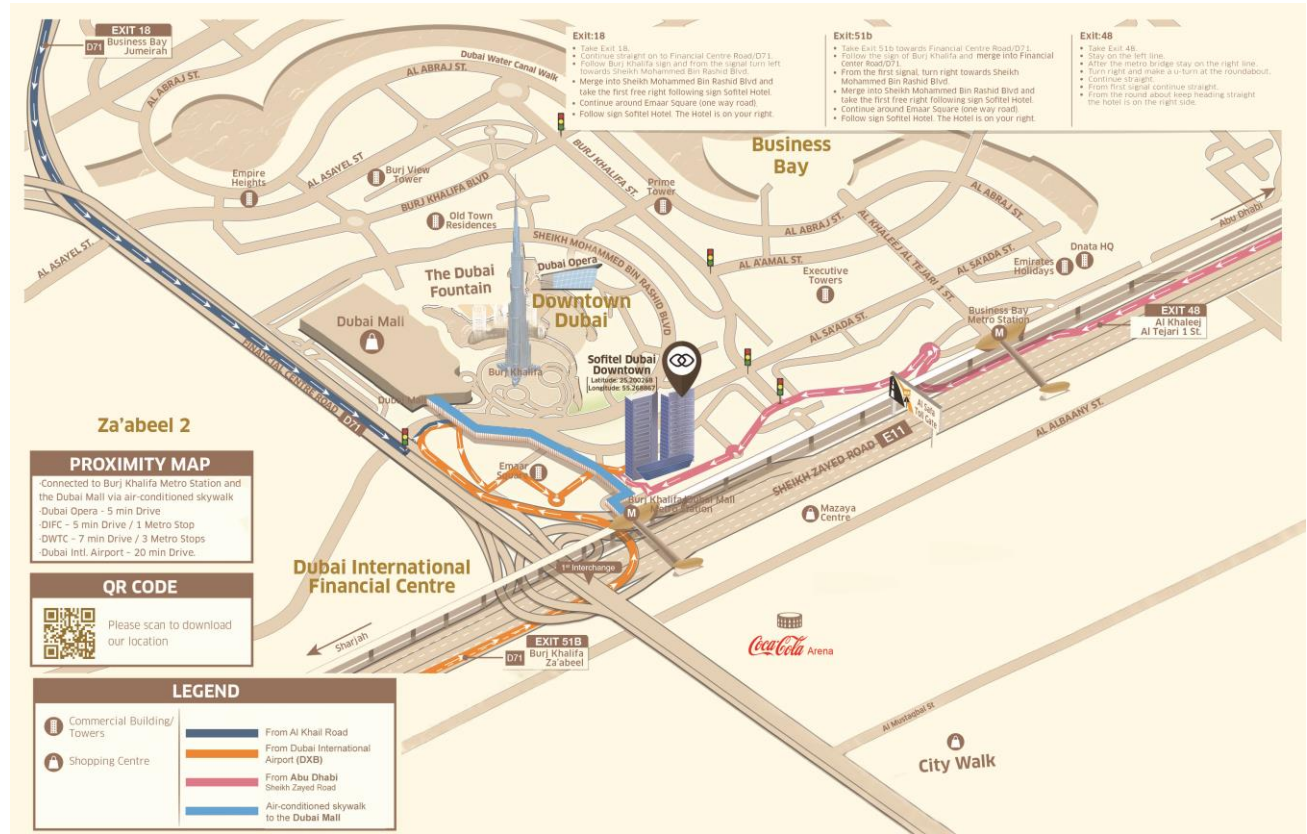
LOCATION MAP

Nearby major leisure & entertainment hubs:

- The Dubai Mall (Dubai Aquarium & Underwater Zoo, Dubai Ice Rink, Reel Cinemas, KidZania, SEGA Republic)
- The Burj Khalifa
- The Dubai Fountain
- Coca Cola Arena
- Dubai Opera
- Dubai City Walk
- Dubai World Trade Center
- Dubai International Financial Centre
- Dubai Heritage Museum
- Sheikh Mohammed Center for Cultural Understanding
- Etihad Museum

Transports:

- Dubai Mall/Burj Khalifa Metro Station (50m)
- Dubai International Airport – DXB (18km)
- Al Maktoum International Airport – DWX (45km)



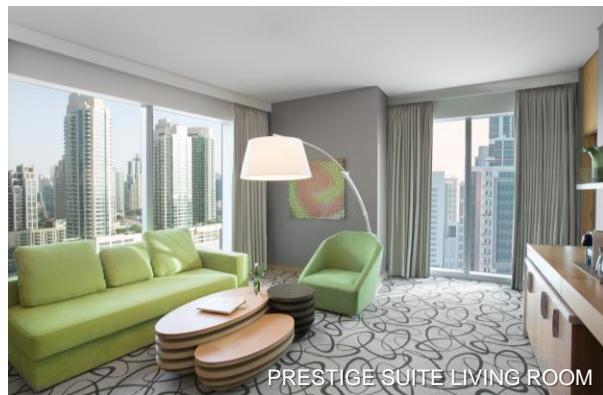
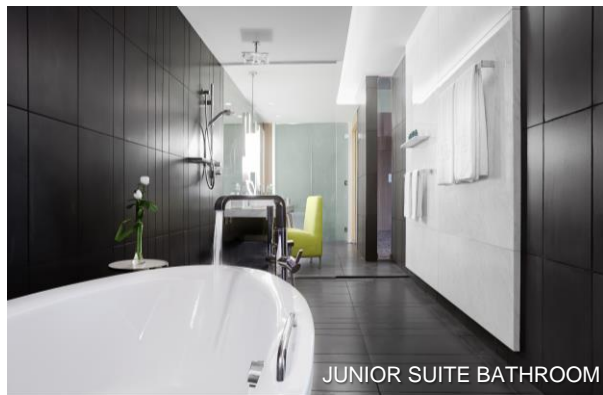
ROOMS & SUITES



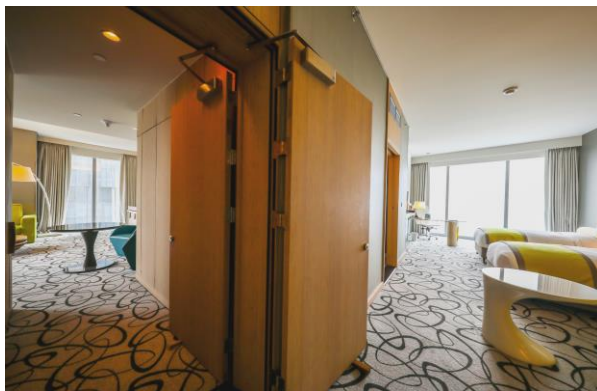
274 CHIC AND SPACIOUS LUXURY ROOMS



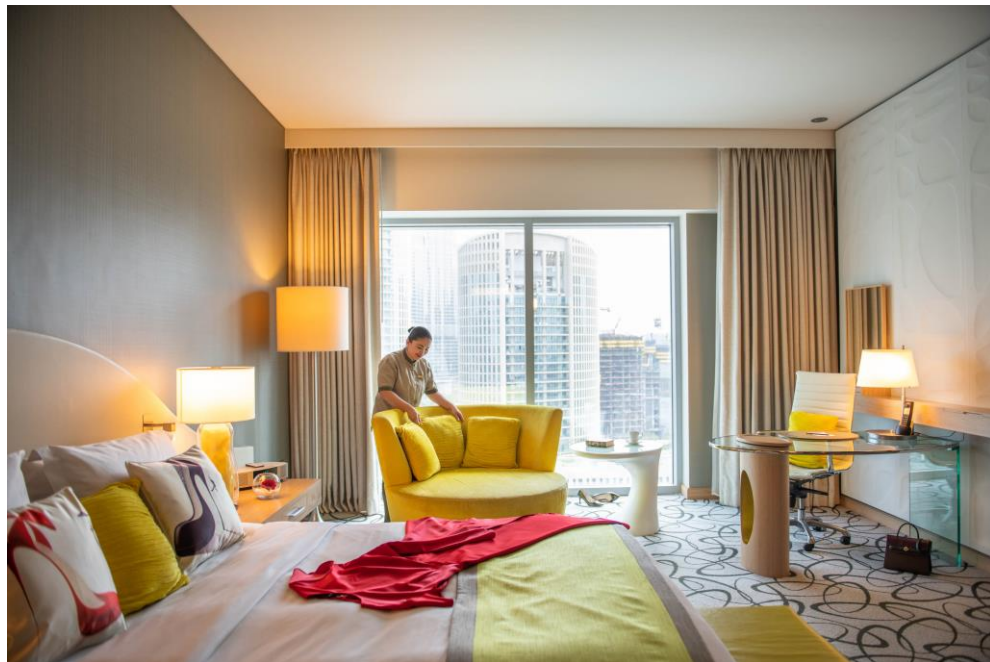
JUNIOR SUITE, OPERA SUITE AND PRESTIGE SUITE



TWO-BEDROOM DOWNTOWN SUITE



SOFIE'S LADIES ROOMS / FLOOR



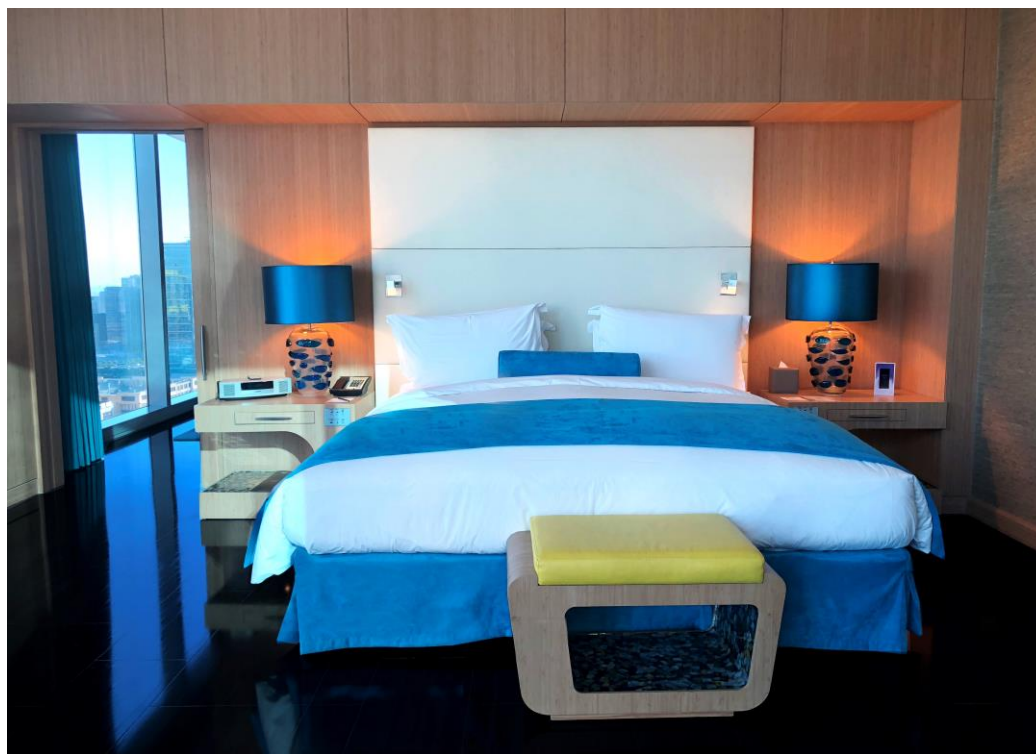
LUXURY LE PETIT PRINCE FAMILY ROOM



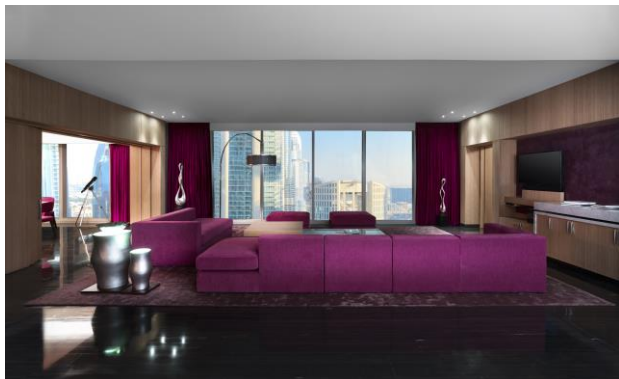
KIDS TROLLEY



PRESIDENTIAL SUITES



ROYAL SUITE



RESTAURANTS & BARS



LES CUISINES RESTAURANT - INTERNATIONAL DINING / 2ND FLOOR



MOSAIC POOL BAR 5TH FLOOR



60 M INFINITY POOL



WAKAME – AWARDS WINNER / CONTEMPORARY ASIAN CUISINE / 3RD FLOOR



CLUB MILLESIME – VIP LOUNGE / 3RD FLOOR



LA PATISSERIE – LOBBY LOUNGE / GROUND FLOOR



DATU ASIAN MUSIC CLUB / 5TH FLOOR



ABOVE ROOFTOP LOUNGE / 5TH FLOOR



MODI GEORGIAN RESTAURANT / 31ST FLOOR



RECREATION



SOFITEL SPA

Ancient traditions from around the world meet the refinement and skill of the latest in French cosmetology to create Sofitel Spa; an exhilarating and rejuvenating experience.

- 8 treatment rooms
- 1 Couples Treatment Room
- Dry sauna and steam room
- Hammam facilities



SOFITEL FITNESS

- Features a full range of state-of-the-art equipment
- Personal trainers to help plan your fitness session
- Jogging routes around Downtown Dubai



LE PETIT PRINCE KIDS CLUB / 05TH FLOOR



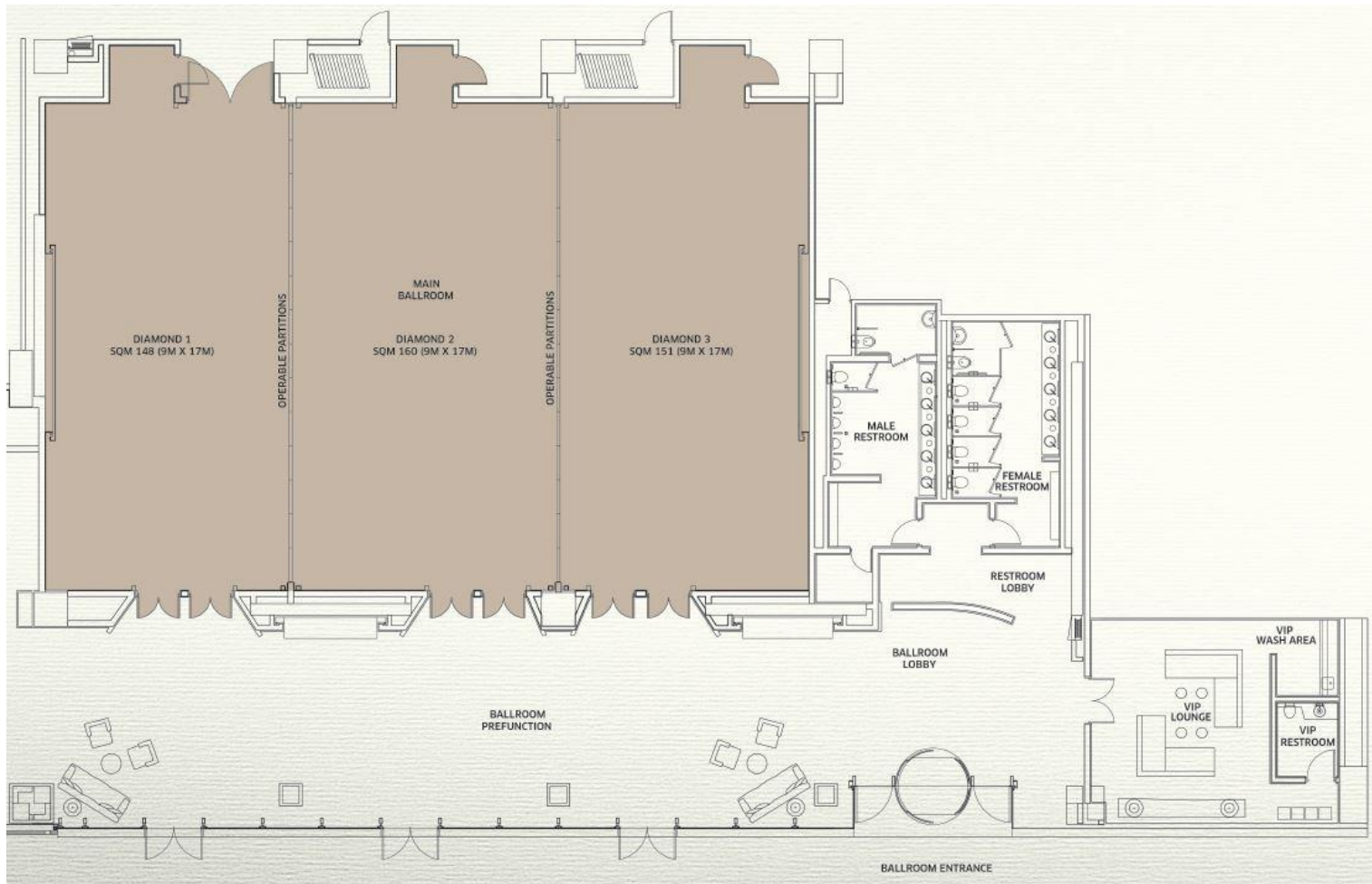
MAGNIFIQUE MEETINGS



DIAMOND BALLROOM

- Designed with a spectacular crystal chandelier that sprawls across the entire ceiling, this chic and glittering ballroom can host up to 450 people.
- Located on the ground floor and with a Private Entrance
- Pre-function area with natural daylight and private VIP Majlis



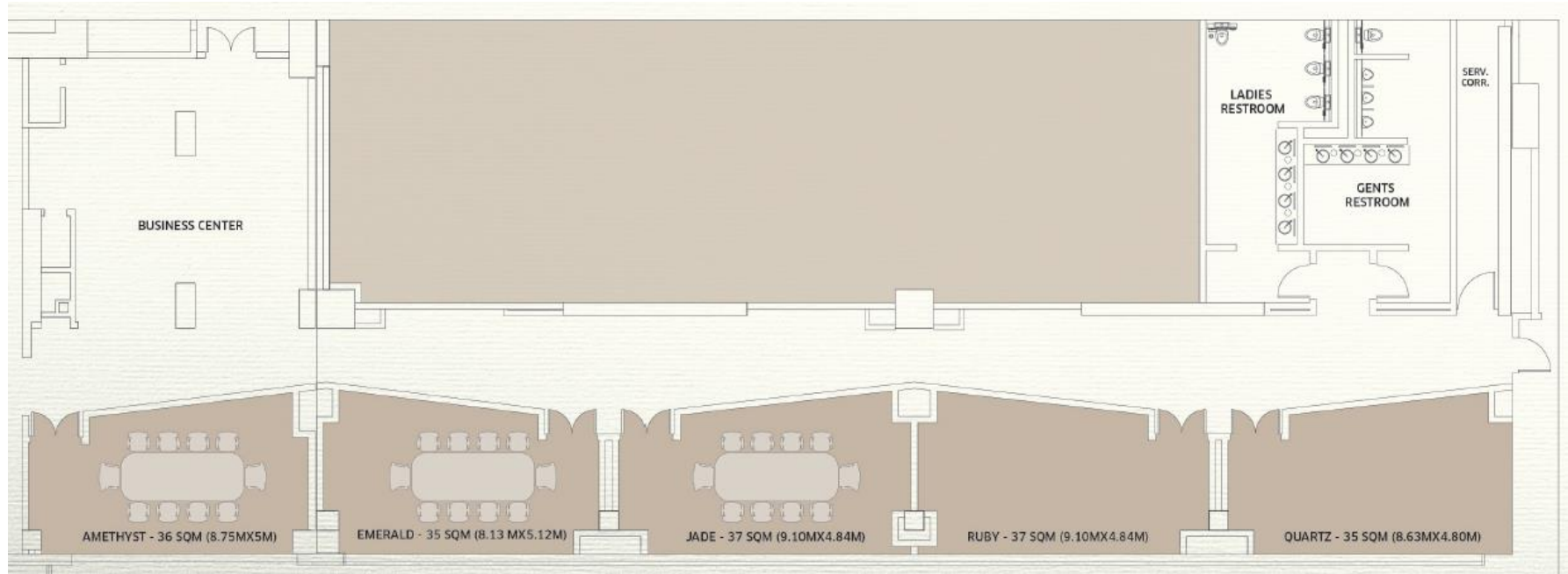


12 MEETING ROOMS – WITH NATURAL DAY LIGHT

- Our Team works with you at every step of the way to ensure that your exceptional events become extraordinary experiences.
- Banqueting venues expressing sophistication and modernity, and customized with espresso machines, free WiFi and the latest in audio-visual technology.







2 OUTDOOR VENUES – WITH BREATHTAKING VIEWS OF DOWNTOWN DUBAI



GRASS POOL



WEDDINGS – BALLROOM / LA TERRACE

[Click Here to watch](#)



CAPACITY CHART

VENUE	AREA (SQM)	LENGTH (M)	WIDTH (M)	CEILING HEIGHT (M)	CLASSROOM	THEATRE	U SHAPE	BOARDROOM	DINNER	COCKTAIL	CABARET
TOPAZ	78	10	8	3	36	60	27	20	50	70	32
AMBER	80	10	9	3	36	60	27	20	50	70	32
ONYX	57	13	4	3	-	-	-	18	24	-	-
SAPPHIRE	77	10	8	3	18	32	15	15	40	40	18
OPAL	99	12	10	3	45	75	27	26	60	75	40
AQUAMARINE	80	9	10	3	36	65	27	20	50	70	32
OPAL & AQUAMARINE	179	21	10	3	87	150	54	-	120	150	88
TURQUOISE	70	8	10	3	36	60	24	20	50	60	30
AMETHYST	36	9	4	3	-	-	-	10	12	-	-
EMERALD	35	9	4	3	-	-	-	10	12	-	-
JADE	37	9	4	3	-	-	-	10	12	-	-
RUBY	37	9	4	3	15	25	12	14	20	25	12
QUARTZ	35	8	4	3	15	25	12	14	20	25	12
GALLERY	218	-	-	5	24	40	25	20	60	70	24
DIAMOND BALLROOM	460	27	17	7	300	600	-	-	450	650	256
DIAMOND 1	148	9	17	7	80	150	40	40	100	200	64
DIAMOND 2	160	9	17	7	90	170	40	40	130	220	80
DIAMOND 3	148	9	17	7	80	150	40	40	100	200	64
DIAMOND 2&1 or 3&2	306	18	17	7	150	350	100	45	230	400	128



KEY HIGHLIGHTS



KEY HIGHLIGHTS

Under 10 mins walk

Air-conditioned skywalk

Burj Khalifa • The Dubai Mall • Dubai Fountain

• Dubai Aquarium • KidZania

Virtual Reality Park • Dubai Ice Rink • Emaar Square

Under 10 mins walk

Open Air Walk

Coca-Cola Arena • City Walk • Green Planet • Dubai Opera

3-5 metro stops

Dubai World Trade Centre • Dubai International Financial Centre •

Mall of The Emirates • Gold & Diamond Park

The Museum of The Future

Shuttle service at selected times to the following:

• La Mer • Laguna Waterpark • Kite Beach (Burj Al Arab View)

• Dubai International Financial Centre • Mall of The Emirates

• Emaar Square • Business Bay



FEEL WELCOME & CONTACT US

BY PHONE +971(0) 4 503 6666

OR BY EMAIL H7492@SOFITEL.COM

